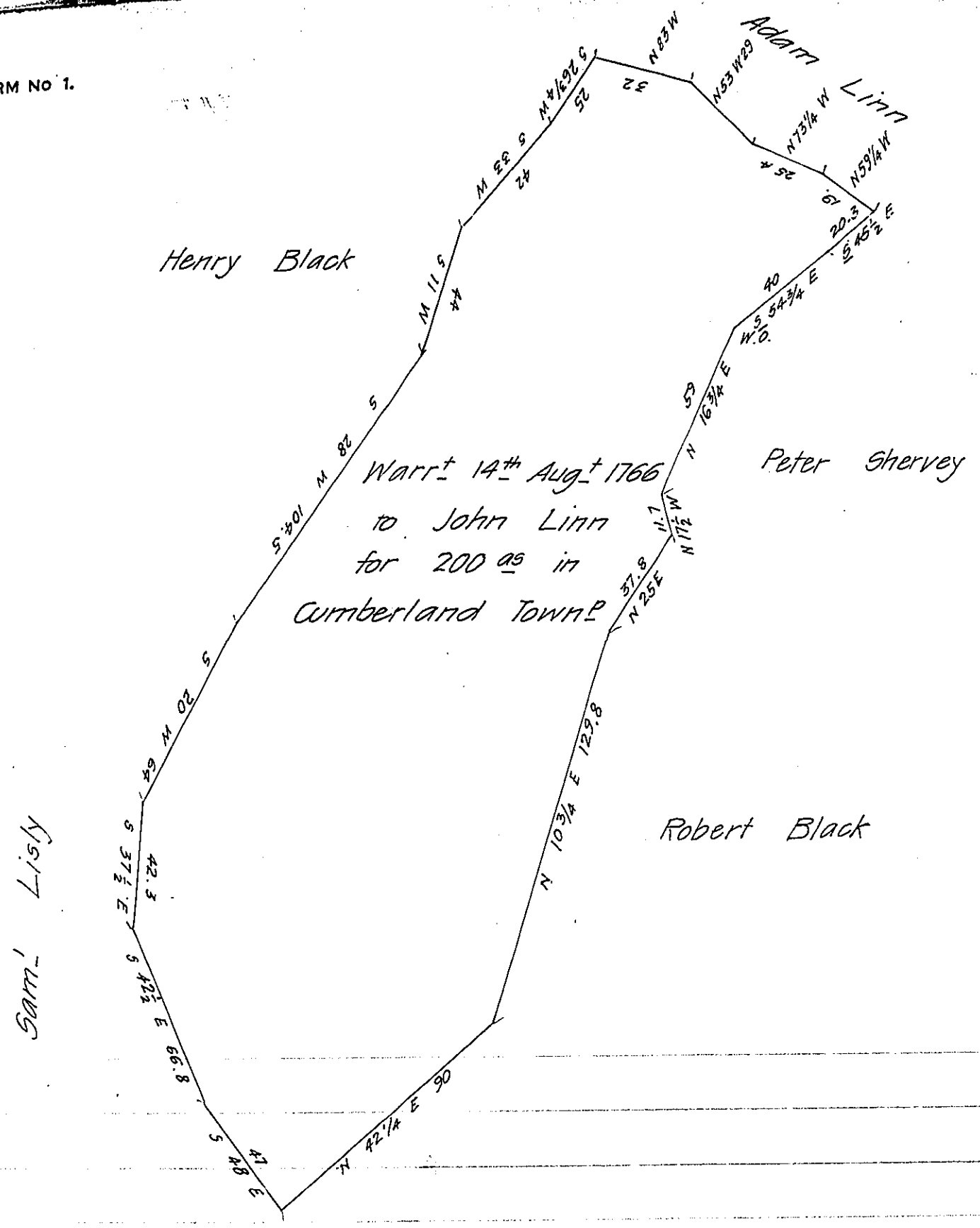


FORM NO 1.



The whole of the above tract is an Interference of a tract of 218 as 69 ps. & all^{cs} Surveyed I presume on the above Warrt to John Linn situate in Cumberland Township in the Manor of Maske and Patented to Hugh Linn by Penns' agent, 15th March 1802 now owned by Doct^r John Runkle.

Witness my hand
 Jan^y 6th 1838

Jno L. Gubernator—

IN TESTIMONY that the above is a copy of the original remaining on file in the Department of Internal Affairs of Pennsylvania, made conformably to an Act of Assembly approved the 16th day of February, 1833, I have hereunto set my Hand and caused the Seal of said Department to be affixed at Harrisburg, this twenty fourth day of December 1908

Henry Houck
 Secretary of Internal Affairs.